



A NEW MILESTONE IN HIGHER EDUCATION

JIS UNIVERSITY

BROCHURE - 2023

VISION OF FOUNDER

Sardar Jodh Singh, our revered Founder, and Chairman of the JIS Group, was a visionary and philanthropist. His goal was to achieve all-around development and constructive societal liberation by distributing the benefits of education to all people and educating everyone, regardless of caste, creed, gender, race, or community. He was certain that education alone could improve the world.

Sardar Jodh Singh

Founder, Chairman of JIS Group



FROM CHANCELLOR'S DESK

We are at the beginning of a new era of student-centered education at JIS University, where maintaining high educational standards and giving students academic flexibility are primary concerns. We help students integrate successfully into the academic ecosystem and equip them to face challenges in their future careers while preserving a strong sense of human values and ethics.

Taranjit Singh

Chancellor, JIS University



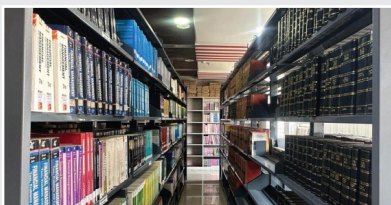
VICE-CHANCELLOR'S MESSAGE

In the present day competitive environment, teaching-learning and research need to reorient to the demands of modern curriculum. It has been our constant endeavor at JIS University to evolve with time to meet such newer challenges of societal significance. This University has been able to apposition itself as one of the leading centers of higher education, through its well-groomed academic system. We welcome you all to this pinnacle of higher education, to be involved in the process of the University, as its stakeholders.

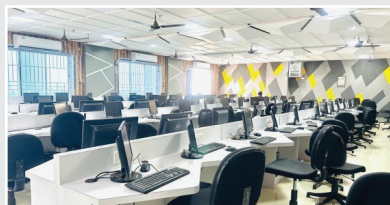
Prof. Bhabes Bhattacharya

Vice-Chancellor, JIS University

GLOBAL INFRASTRUCTURE



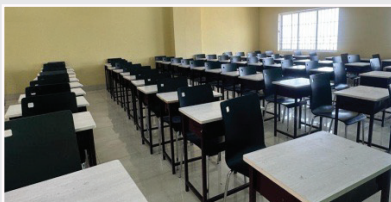
LIBRARY



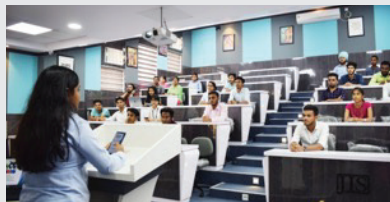
COMPUTER LAB



CAMPUS



CLASSROOM



SMART CLASSROOM



FLIP CLASSROOM



GYM ROOM

INCREDIBLE INDIA

Studying abroad in India is an experience like no other. It is a wide and vast country with diverse cultures and challenging experiences. The liberalization of the Indian economy has created many socio-economic changes, which also include the emergence of modern Indian education. Internalization of higher education is a global phenomenon that involves the movement of education providers to the establishment of private universities, institutes, R&D centers, and many programs across the country. The JIS University is located in Kolkata, the educational hub of India. The University invites you to study abroad on our beautiful campus. You will live and study alongside Indian students and around the world, make lifelong friends and return home with a new perspective on the world and the life skills that employers are looking for.

THE HERITAGE OF EDUCATION HUB – KOLKATA

Kolkata has played a pioneering role in the development of the modern education system in India. Western models of education came to India through Kolkata. People like Nobel Laureate Rabindranath Tagore, David Hare, Ishwar Chandra Vidyasagar, William Carey, Jagadish Chandra Bose, and Prafulla Chandra Ray played a leading role in the fields of science, humanities, and technology in this city. The Calcutta University, Kharagpur IIT, Fort William College, and the Indian Institute of Management, Kolkata are the first higher educational institutions established in India located in Kolkata. The oldest medical school in Asia, the Calcutta Medical College, was also set up in Kolkata. Kolkata played a significant role in the 19th century known as the Bengal Renaissance. This legacy is being carried forward by JIS University.



#EDUCATIONBEYONDORDINARY

37 **170** **39000+**
INSTITUTIONS PROGRAMMES STUDENTS



www.jisuniversity.ac.in





REDEFINING THE RULES OF THE EDUCATION INDUSTRY

The digital transformation is changing our society everyday. Technological and digital skills are gaining momentum in the labor and educational sectors. As a result, education today needs to prepare students for changing tasks and roles. Rethinking education in the context of education 4.0 has become a central issue for today's policymakers. JIS University has taken up the issue of redesigning the education system in the context of the digital age with utmost seriousness and has felicitated all kinds of state-of-the-art technology at our campus.

ECO-FRIENDLY CAMPUS

JIS University is surrounded by lush greenery. Students are comforted by the green surroundings, which establish the tone for learning. Apart from the green campus, the JIS University classrooms are fully Wi-Fi equipped, allowing teachers and students to communicate important information and papers, update presentations, and store project files quickly and easily. Students can also establish peer groups to help them finish their assignments faster. Classroom teaching is getting more dynamic these days, and teachers are using a strong Wi-Fi connection to make the entire learning process more effective and entertaining.

DIGITIZATION OF LEARNING METHODOLOGY

FLIPPED LEARNING

Our flipped learning process is well-organized into weekly/topic folders and has well-defined learning objectives. They are created using Blendspace digital content creation platforms, which directly promote learning outcomes and engage students by allowing them to interact with engaging information, peers, and the teacher. In addition, the Flipped Learning Classroom features a Neotouch Interactive Flat LCD Panel.

SUPER COMPUTER

Smart equipment is a must-have when it comes to smart courses. For the purpose of providing students with a world-class education, JIS University offers state-of-the-art, current smart courses on smart computers. In our smart classes, we employ computers or laptops with Wi-Fi, LEDs, e-textbooks, projectors, and other technical instruments.



DIGITAL LECTURES ARCHIVE

JIS University has created an archive of recorded lesson-by-lesson lectures of our faculty members in all subjects. This rich collection of searchable, accessible, digitized materials helped the students while they were unable to attend their classes during the pandemic period.

DIGITAL LIBRARY

JIS University students can access information and read content without having to physically visit a library. The digitalization process at JIS allows faculty and students to access the materials. Students benefit from the digitization of millions of books.

COURSERA CERTIFICATE

The certificates from Coursera are recognized worldwide and are partnered with 200+ top universities and industries. JIS has a special collaboration with COURSERA, which provides students with free access to over 6000+ courses and certificates. Hands-on learning for job-ready skills will benefit students.

CENTRE OF EXCELLENCES

RESEARCH & DEVELOPMENT

Since the inception of JIS University, research and development has played a crucial role. Doctoral programs of various subjects has been offered by the university under experienced guides. Some of the core research areas include VLSI Design and Testing, AI using resistive memories, Medical Imaging, Computer Vision and Pattern Recognition, Machine Learning, Data Science, Reversible and Quantum Computing, Application of IoT in Healthcare Sector, Microstrip Patch Antenna, Molecular Pharmacology and much more.

BOSCH LAB

The BOSCH lab at JIS Institutions assists students in conducting cutting-edge research focused on safe, secure, robust, and explainable AI. JIS is always on the lookout for new ways to broaden students' skills and collaborate with corporate thought leaders.

CRINNOTECH LAB

JIS Institutions has built and institutionalized a Crinnotech lab based on modern scientific research that has not only provided useful insight but has also been used to research and project development. Well-designed Crinnotech lab provides students vital qualitative information, conduct research and development activities.

JIS UNIVERSITY

PROGRAMS

ENGINEERING

- » **B.Tech** (4Yrs)
 - CSE (Computer Science Engineering)
 - CSE with AI & Machine Learning
 - CSE with Cyber Security
 - CSE with Data Science
- » **B.Tech CSE (Lateral)** (3Yrs)
- » **PhD**

PHARMACY

- » **B.Pharm** (4Yrs)
- » **B.Pharm (Lateral)** (3Yrs)
- » **BMLT** (Bachelor of Medical Laboratory Technology) (3Yrs)
- » **M.Pharm** (2Yrs)
 - Pharmaceutics
 - Pharmacology
 - Pharmaceutical Chemistry
 - Pharmaceutical Quality Assurance
- » **D.Pharm** (2Yrs)
- » **PhD**

LAW

- » **Integrated BBA-LLB (H)** [5 Yrs]
- » **LLB** (3Yrs)
- » **LLM** [Specialisation: Corporate Law, Criminal Law, Constitutional Law] (2Yrs)
- » **PhD**

AGRICULTURE

- » **B.Sc Agricultural Science (H)** [4 Yrs]

SCIENCE

- » **B.Sc** (3Yrs)
 - Biotechnology
 - Microbiology
 - Geology
- » **M.Sc** (2Yrs)
 - Biotechnology
 - Microbiology
 - Applied Geology
 - Remote Sensing & GIS
 - Physics
 - Chemistry
 - Mathematics & Computing
- » **PhD**

COMPUTER APPLICATION

- » **BCA** (3Yrs)

MANAGEMENT

- » **BBA** (3Yrs)
- » **MBA** (2Yrs)
 - Dual Specializations offered in MBA :
[Human Resource Management, Marketing Management, Financial Management, Information Technology, Business Analytics, Media, Tourism, Retail, Pharmacy, Supply Chain Management, Operations Research]
- » **PhD**

EDUCATION

- » **B.Ed** (2Yrs)
- » **PhD**

HOTEL ADMINISTRATION

- » **B.Sc** in Hospitality & Hotel Administration
- » **BA** in International Culinary Arts
- » **BA** in International Hospitality & Tourism Management
- » **MBA** in Hospitality & Hotel Administration
- » **Diploma** in Hotel Operation
- » **Diploma** in Food Production & Bakery
- » **Diploma** in Food & Beverage Service

For Admission Query in
Department of Hotel Administration :

 **9836106964**

DATA SCIENCE & DIGITAL TRANSFORMATION

- » **M.Tech in Data Science & Digital Transformation** [3 Yrs]
(Study & Work simultaneously)

 **86977 43361/62**

APPLY NOW

 **www.jisuniversity.ac.in**



JIS UNIVERSITY

JIS INSTITUTE OF ADVANCED STUDIES AND RESEARCH



CENTRE FOR DATA SCIENCE (CDS)

- » M.Tech in Computer Science & Engineering (Specialization in Data Science) [2Yrs]
- » M.Tech in Data Science & Cloud Computing (Executive) [3Yrs]
- » PhD



CENTRE FOR HEALTH SCIENCE & TECHNOLOGY (CHEST)

- » M.Sc in Medical Biotechnology & Bioinformatics [2Yrs]
- » M.Sc in Genetics (Specialization in Molecular Genomics) [2Yrs]
- » PhD



CENTRE FOR INTERDISCIPLINARY SCIENCES (CIS)

- » M.Sc in Polymer Science & Technology [2Yrs]
- » M.Sc in Chemistry (Specialization in Medicinal Chemistry) [2Yrs]
- » M.Sc in Chemistry (Specialization in Analytical Chemistry) [2Yrs]
- » Integrated M.Sc-PhD in Paint & Coating
- » M.Tech in New & Renewable Energy & Applications [2Yrs]
- » PhD



JIS INSTITUTE OF ADVANCED STUDIES & RESEARCH

APPLY NOW

www.jisiasr.org



98743 75544

BEYOND CLASSROOM

HEALTH CHECK-UP CENTRE

JIS University campus is well-equipped with the essential medical equipments and staffed by experienced Medical Officers.

BANK

University campus has a full-service Bank to assist students, faculties & staffs. An ATM on campus helps students to quickly pay for last-minute purchases without having to drive around.

CLUB

We at JIS University promote the growth of our students beyond studies through extra-curricular activities.

There are 15 various clubs that are operating at JIS University.

SKILLX

"SKILLX" is an annual JIS University event in which students demonstrate their talent, innovation and creativity through different innovative models and ideas ranging from pharmaceutical waste management systems, herbal face wash, aquaponics mushroom production, bio control agent & organic juice component from organic industrial waste, accident prevention road safety model, high-tech obstacle-avoidance car, data transfer using LED technology, human-human interface, and so on. The judging panel is made up of specialists from many fields.

TECH & CULTURAL FEST

In Tech Fests many remarkable ideas are exhibited, and students are inspired to think in new ways. It focuses on technology's positive effects on society through innovation, ideas, and implementation. Robotics, Drone Challenge, Coding Contest, CODIAC, Hardware Battleship, Model Display, and Gaming are among the festival's most intriguing events.

Cultural activities at the JIS University allows all students to participate in culturally enriching events. Students participate in a variety of events, including solo & group singing, solo & group dancing, debates, recitations, photography, fashion shows, painting, and more.

INTERNATIONAL WORKSHOP & SEMINAR

JIS University regularly holds national and international seminars, workshops, and webinars aimed at enriching the educational experience of its students. Eminent personalities from across the globe participate as speakers.

INDUSTRY VISIT

JIS University organizes several industry visits for the students during their study to offer them insights into the industrial way of working of various firms

INTERNSHIP

The JIS University arranges internships for students at a variety of reputable companies across several industries. Summer and winter internships are required as part of the program, and students gain practical experience in their chosen sector.

INDUSTRY INSTITUTE PARTNERSHIP CELL

JIS believes that students can only be made industry ready if the institute and industry have a close partnership. In order to develop and enhance Industry Institute Partnership, JIS Group hosts events, seminars, and conferences on a regular basis. By sponsoring internships, funded R&D projects, seminars, workshops, placement, and various other industrial training programs, the cell identifies and supports institutional preparation for fulfilling industrial demands. To bridge the gap between industry and academia, the IIPC of JIS works closely with organizations such as NASSCOM, FICCI, BCCI, CII, ICC, TIE, IGCC, NHRDN, and others.

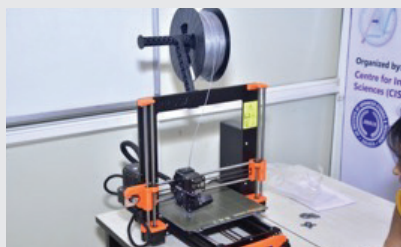
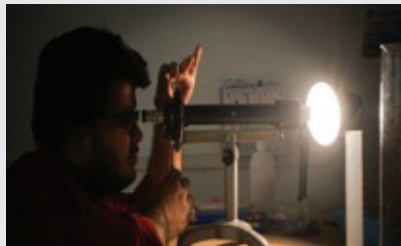
ENTREPRENEURSHIP DEVELOPMENT CELL

The Entrepreneurship Development Cell strives to prepare students to be successful entrepreneurs in the future by providing training and mentoring. To inspire students to be more imaginative and entrepreneurial, JIS University has launched the "Idea-O-Meter," Project which is an online crowd-funding platform where anyone may express their creative ideas for a particularly innovative project that they would want to see realized.

HOSTEL FOR NATIONAL & INTERNATIONAL STUDENTS

We at JIS University have on-campus neat, clean and healthy hostel facilities for both boy & girl students who are coming to study from abroad. The hostels are very well disciplined & security of each & every students are our prime concern. The students are allowed to move freely. The hostel facilities are available in both AC & NON AC mode.

OUR LABS



Great Stories Begin Here...

We believe that “Potential is not an endpoint but a capacity to grow and learn”.

After burgeoning with leaps and bounds in technology, It was the bold move of the **JIS Group** Institutes to envisage ahead of the Institutional boundaries to inculcate freedom in course curriculum, pedagogic innovative and pioneering programmers in socially under managed sectors was a beginning of its journey to achieve the mandate it has given itself in terms of unique innovative and distinct path in education sector.

Our **faculty** nurtures enthusiasm of students to learn, help facilitate exchanging ideas and prepare them intellectually with diverse skill sets to face a vibrant work force on completion of their chosen curriculum and field of specialization. Achievement of academic excellence, high level of personal conduct and integrity are our main focus which you will find attractive. Our passionate learning environments not only strengthen existing talents but also challenge students to develop a pleasant and meaningful personality.

Training, Career Guidance and creating Placement opportunities occupies a major role in shaping the future technocrats and nourishing efficient resources.

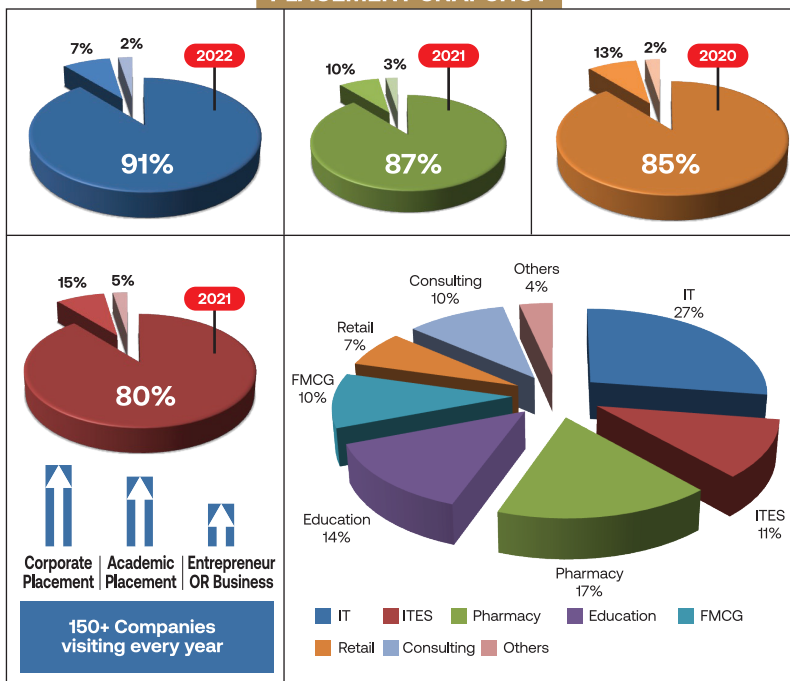
PLACEMENTS

The Training & Placement Cell is provided with all the facilities to enable deserving students of the Institutes to get competitive placements. The Training & Placement Cell plays a crucial role in locating job opportunities for Under Graduates and Post Graduates passing out from the colleges by keeping in touch with the reputed firms and industrial establishments. The Placement Cell operates round the year to facilitate contacts between companies and graduates. The number of students placed through the campus interviews is continuously rising.



The Department prepares the students for the process of recruitment and simultaneously create awareness among the companies about the recruitment opportunities. The T&P Cell aims to match the requirements of the Corporate World with the aspiration of the students thereby facilitating the achievement of synergy between the two.

PLACEMENT SNAPSHOT



HIGHEST PACKAGE OFFERED

YEAR	PACKAGE
2022	18.00 LPA
2021	10.00 LPA
2020	8.00 LPA
2019	7.50 LPA

AVERAGE PACKAGE OFFERED

YEAR	PACKAGE
2022	4.10 LPA
2021	3.50 LPA
2020	3.20 LPA
2019	3.00 LPA

THANK YOU RECRUITERS

JIS Group is thankful to the Organisations where the JIS students are growing their careers successfully.



ACHIEVEMENTS, AWARDS & ACCOLADES



JIS University received edufuture excellence award as the Best Private University



JIS University received Uttar Excellence award as the best Private University from tv9 Bangla



JIS UNIVERSITY RECEIVED ROYAL EXCELLENCE AWARD AS THE BEST PRIVATE UNIVERSITY IN WEST BENGAL



JIS UNIVERSITY RECEIVED BYATIKRAM FASTEST GROWING UNIVERSITY OF EASTERN REGION AWARD FROM BYATIKRAM GROUP.



RECEIVED "EDUFUTURE EXCELLENCE AWARD" BY ZEE MEDIA DIGITAL". AWARDED AS BEST PRIVATE UNIVERSITY 2022



OUTSTANDING CONTRIBUTION TO EDUCATION & SKILL AND RECOGNIZES AS BEST UNIVERSITY IN EAST INDIA 2018 FROM CENTRE FOR EDUCATION GROWTH & RESEARCH(CEGR)



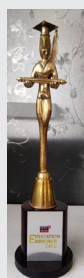
RECEIVED "ACADEMIC EXCELLENCE AWARD" BY TV 9 BANGLA". AWARDED AS BEST PRIVATE UNIVERSITY 2021 AND 2022



RECOGNIZES AS UPCOMING HEI/UNIVERSITY IN INTERNATIONAL EDUCATION (EAST INDIA) IN 2018 FROM GLOBAL INDIA EDUCATION FORUM



EDUCATION EMINENCE AWARD 2022 BY NEWS 18 BANGLA"- AWARDED AS BEST PRIVATE UNIVERSITY 2022



GURUKUL AWARDS 2022 AS THE BEST PRIVATE UNIVERSITY FROM DEFINING EXCELLENCE IN EDUCATION



JIS UNIVERSITY HAS BEEN AWARDED AS THE 'OUTSTANDING UNIVERSITY IN EASTERN INDIA' AT THE EDUCATION EXCELLENCE AWARDS 2019 FROM ZEE 24 GHANTA AND ALSO THE "BEST PRIVATE UNIVERSITY" AWARD 2020 AT THE EDUCATION EXCELLENCE AWARD 2020

RANKINGS



JIS UNIVERSITY RECEIVED **1ST RANKING** UNDER THE BEST B SCHOOL CATEGORY UNDER PRIVATE UNIVERSITY IN WEST BENGAL BY **OPEN RANKINGS 2022**.

•

JIS UNIVERSITY RECEIVED **2ND RANKING** UNDER THE BEST B SCHOOL CATEGORY UNDER PRIVATE UNIVERSITY IN EASTERN INDIA BY **OPEN RANKINGS 2022**.



JIS UNIVERSITY IS NOW A REGISTERED MEMBER OF **ALL INDIA MANAGEMENT ASSOCIATION (AIMA)**. MAT QUALIFIED CANDIDATES CAN NOW TAKE ADMISSION IN **MBA COURSES** FROM 2022 SESSION.

Outlook

JIS UNIVERSITY RECEIVED **13TH RANKING** FOR INDIA'S BEST B-SCHOOLS 2022 (TOP PRIVATE MBA INSTITUTIONS – EAST ZONE) BY **OUTLOOK RANKINGS 2022**



JIS UNIVERSITY RECEIVED **5TH RANKING** IN THE **TOP 10 PRIVATE B-SCHOOLS** OF WEST BENGAL 2022 BY **TIMES B-SCHOOL**



JIS UNIVERSITY RECEIVED **AA+ RATING** – EAST ZONE (WEST BENGAL) BY **CAREERS360** INDIA'S BEST LAW COLLEGES 2022

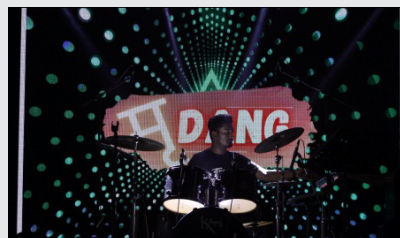
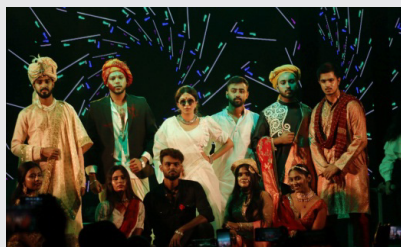
•

JIS UNIVERSITY WAS RECOGNIZED AS INDIA'S **EMERGING UNIVERSITIES** 2023 BY **CAREERS360** INDIA'S BEST UNIVERSITIES 2022

•

JIS UNIVERSITY WAS RECOGNIZED AS A **BUDDING UNIVERSITY** BY **CAREERS360** INDIA'S BEST UNIVERSITIES 2021

JIS UNIVERSITY EVENTS



Approvals, Affiliation and Recognitions

JIS University is Affiliated by

- ⇒ University Grants Commission (UGC), New Delhi
- ⇒ All India Council for Technical Education (AICTE)
- ⇒ Bar Council of India (BCI)
- ⇒ Pharmacy Council of India (PCI)
- ⇒ National Council for Teacher Education (NCTE)
- ⇒ United Nations Academic Impact (UNAI)

JIS University is also a member of

- ⇒ Association of Indian Universities (AIU) since 2017.
- ⇒ JIS University is recognized as a Scientific & Industrial Research Organization by the Department of Scientific & Industrial Research, Government of India

Accreditations

- ⇒ Recognized by University Grants Commission (UGC)
- ⇒ The University has been included in the list of Universities established as per Section 2(f) of the UGC Act, 1956
- ⇒ Approval by All India Council of Technical Education(AICTE)
- ⇒ Recognized by Pharmacy Council of India
- ⇒ Approval by National Council for Teacher Education
- ⇒ JISU is now a member of the UNAI
- ⇒ Recognized and approved by Bar Council of India





ADMISSION ENQUIRY:

Mob. No.: **+91 8697743361/62 | 9073322509 | 9330906163**

Email id: **admissions@jisuniversity.ac.in**

Visit at: **www.jisuniversity.ac.in**

TRAINING & PLACEMENT OFFICE

Mob. No.: **+91 98310 46804**

For other enquiry Email ID: **info@jisuniversity.ac.in**

ADDRESS:

JIS University, 81, Nilgunj Road, Agarpara, Kolkata (West Bengal)
India, Pin Code: 700109